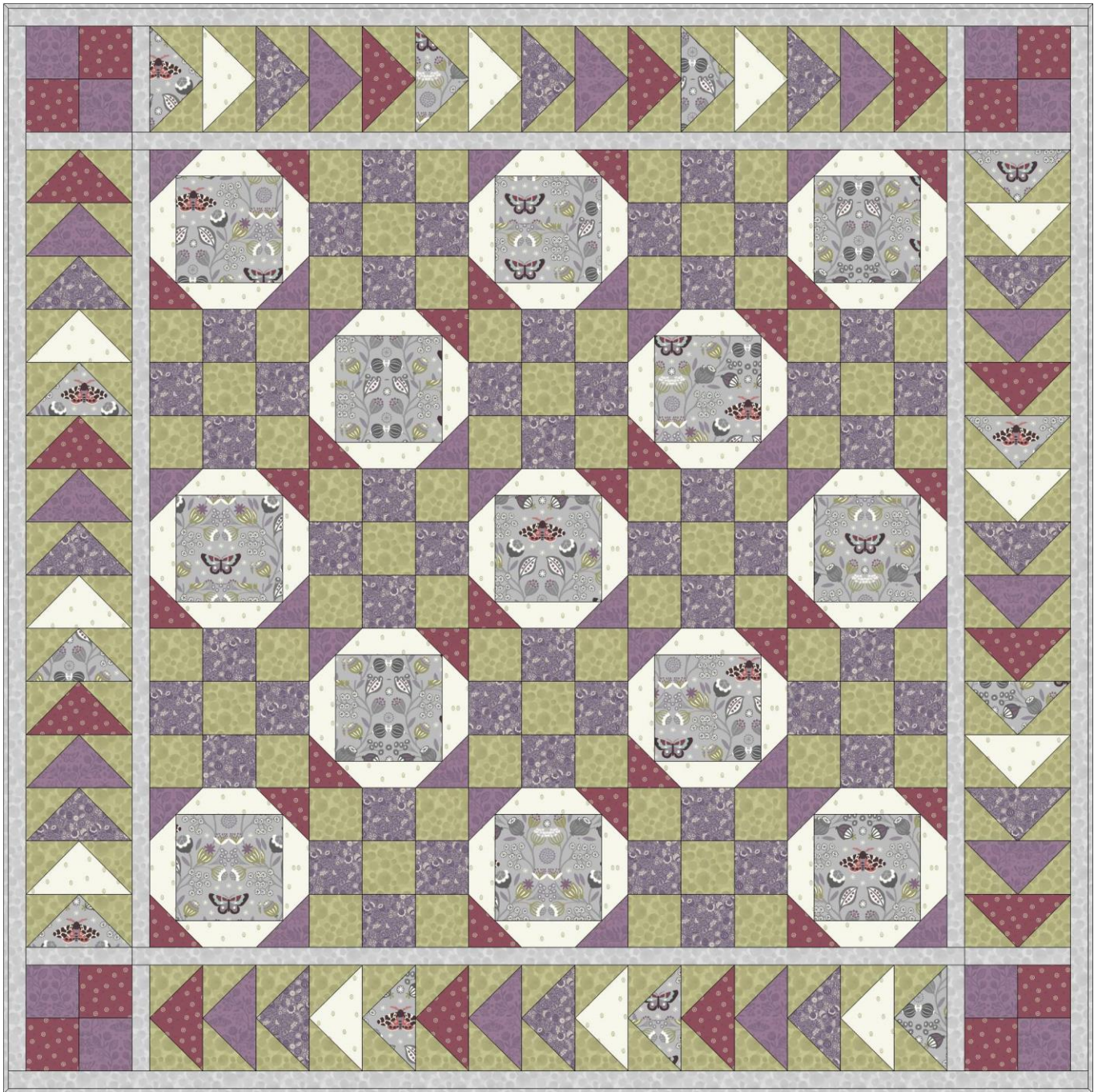




## Winter Garden Quilt

*Designed and made by Sally Ablett*

Quilt Size: 61" x 61"    Block Size: 9½" x 9½"



### DESIGN 1 (Main Diagram)

#### **FABRIC REQUIREMENTS (Winter Garden Collection)**

- Fabric 1: ⅝yd - 60cm - A316.2 (Winter garden grey)
- Fabric 2: ⅞yd - 80cm - A317.1 (Moth spot cream)
- Fabric 3: ⅝yd - 60cm - A318.3 (Seed heads purple)
- Fabric 4: ⅝yd - 60cm - A319.2 (Winter garden mono purple)
- Fabric 5: ⅝yd - 60cm - A320.3 (Star seed claret)
- Fabric 6: 1⅜yd - 1.2mtr - BB94 (Light Grey Bumbleberries)
- Fabric 7: 1yd - 1mtr - BB153 (Orchard Bumbleberries)

Wadding and backing 65" x 65"

All measurements include ¼" seam allowances; press each seam as you go



cut 45° angles from top right and top left corners

**Figure 1**

**CUTTING**

- 1.** From fabric 1 cut:  
 (13x) 6½" x 6½" (block 1)  
 (3x) 7¼" x 7¼" cut in half diagonally twice (border)
- 2.** From fabric 2 cut:  
 (52x) 2" x 7¼" and trim a 45° angle at each end as in Figure 1 and the Main Diagram (block 1)  
 (3x) 7¼" x 7¼" cut in half diagonally twice (border)
- 3.** From fabric 3 cut:  
 (40x) 3½" x 3½" (block 2)  
 (3x) 7¼" x 7¼" cut in half diagonally twice (border)
- 4.** From fabric 4 cut:  
 (13x) 3⅞" x 3⅞" cut in half diagonally once (block 1)  
 (3x) 7¼" x 7¼" cut in half diagonally twice (border)  
 (8x) 3½" x 3½" (corner blocks)
- 5.** From fabric 5 cut:  
 (13x) 3⅞" x 3⅞" cut in half diagonally once (block 1)  
 (3x) 7¼" x 7¼" cut in half diagonally twice (border)  
 (8x) 3½" x 3½" (corner blocks)
- 6.** From fabric 6 cut:  
 (2x) 1½" x 47½" (you will need to join the strips for the length) inner border, top & bottom  
 (2x) 1½" x 45½" (you will need to join the strips for the length) inner border, sides  
 (2x) 1½" x 61½" (you will need to join the strips for the length) outer border, top & bottom  
 (2x) 1½" x 59½" (you will need to join the strips for the length) outer border, sides  
 (8x) 1½" x 6½" corner strips
- 7.** From fabric 7 cut:  
 (60x) 3½" x 3½" (block 2)  
 (60x) 3⅞" x 3⅞" cut in half diagonally once (border)

**MAKING UP BLOCKS 1 and 2**

Lay out the fabric pieces for block 1, as in Figure 2

Fold a trimmed strip of fabric 2 in half and fold a centre square of fabric 1 in half. Match the two folds and pin into place. Stitch the two together. Repeat on all four sides of the centre square. Next sew the triangles to the corners

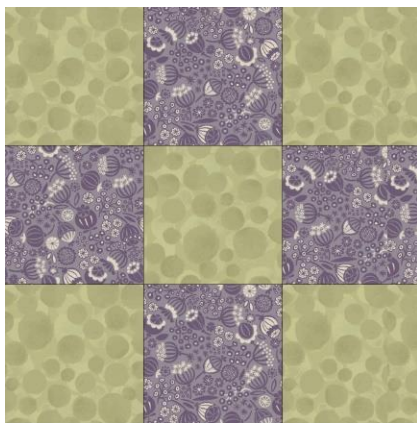
Make 13 in total



**Figure 2**

Lay out the fabric pieces for block 2, as in Figure 3

Stitch in rows and then stitch the rows together to make the block. Make 12 in total



**Figure 3**

Sew the blocks together in rows, as in Figure 4, Figure 5 and the Main Diagram, alternating the rows as shown to complete the quilt centre



**Figure 4**



**Figure 5**

### **MAKING UP THE CORNER BLOCKS**



**Figure 6**

Stitch the corner blocks together as in Figure 6. Make 4 in total

## **MAKING UP THE FLYING GEESE BLOCKS**



**Figure 7**

Sew the small triangles to each side of the larger triangle as in Figure 7. Make 60 in total

Join 15 Flying Geese blocks together as in the Main Diagram, for each border. Make 4 in total

Stitch the 1½" x 6½" fabric 6 strips to each end of your Flying Geese strips. Add the corner blocks to each end of the top and bottom Flying Geese strips

### **Borders**

Sew the 1½" x 45½" inner border strips of fabric 6 to the sides of the quilt centre. Sew the 1½" x 47½" inner border fabric 6 strips to the top and bottom

Now sew the Flying Geese strips to the sides and then to the top and bottom of the quilt

Sew the 1½" x 59½" outer border strips of fabric 6 to the sides of the quilt. Sew the 1½" x 61½" inner border fabric 6 strips to the top and bottom, to complete the quilt

### **Quilting**

Sandwich quilt top, wadding and backing together. Quilt by hand or machine as desired

Trim backing and wadding to size

### **Binding**

Use your favourite method from fabric 6 to bind the quilt



## Winter Garden Quilt

*Designed and made by Sally Ablett*

Quilt Size: 61" x 61"    Block Size: 9½" x 9½"



### DESIGN 2 (Main Diagram)

#### **FABRIC REQUIREMENTS (Winter Garden Collection)**

- Fabric 1: 5/8yd - 60cm - A316.1 (Winter garden natural)
- Fabric 2: 7/8yd - 80cm - A317.3 (Moth spot grey)
- Fabric 3: 5/8yd - 60cm - A318.2 (Seed heads green)
- Fabric 4: 5/8yd - 60cm - A319.1 (Winter garden mono grey)
- Fabric 5: 5/8yd - 60cm - A320.1 (Star seed cream)
- Fabric 6: 1 3/8yd - 1.2mtr - BB153 (Orchard Bumbleberries)
- Fabric 7: 1yd - 1mtr - BB158 (Claret red Bumbleberries)

Wadding and backing 65" x 65"

All measurements include ¼" seam allowances; press each seam as you go



cut 45° angles from top right and top left corners

**Figure 1**

## **CUTTING**

- 1.** From fabric 1 cut:  
 (13x) 6½" x 6½" (block 1)  
 (3x) 7¼" x 7¼" cut in half diagonally twice (border)
- 2.** From fabric 2 cut:  
 (52x) 2" x 7¼" and trim a 45° angle at each end as in Figure 1 and the Main Diagram (block 1)  
 (3x) 7¼" x 7¼" cut in half diagonally twice (border)
- 3.** From fabric 3 cut:  
 (40x) 3½" x 3½" (block 2)  
 (3x) 7¼" x 7¼" cut in half diagonally twice (border)
- 4.** From fabric 4 cut:  
 (13x) 3⅞" x 3⅞" cut in half diagonally once (block 1)  
 (3x) 7¼" x 7¼" cut in half diagonally twice (border)  
 (8x) 3½" x 3½" (corner blocks)
- 5.** From fabric 5 cut:  
 (13x) 3⅞" x 3⅞" cut in half diagonally once (block 1)  
 (3x) 7¼" x 7¼" cut in half diagonally twice (border)  
 (8x) 3½" x 3½" (corner blocks)
- 6.** From fabric 6 cut:  
 (2x) 1½" x 47½" (you will need to join the strips for the length) inner border, top & bottom  
 (2x) 1½" x 45½" (you will need to join the strips for the length) inner border, sides  
 (2x) 1½" x 61½" (you will need to join the strips for the length) outer border, top & bottom  
 (2x) 1½" x 59½" (you will need to join the strips for the length) outer border, sides  
 (8x) 1½" x 6½" corner strips
- 7.** From fabric 7 cut:  
 (60x) 3½" x 3½" (block 2)  
 (60x) 3⅞" x 3⅞" cut in half diagonally once (border)

## **MAKING UP BLOCKS 1 and 2**

Lay out the fabric pieces for block 1, as in Figure 2

Fold a trimmed strip of fabric 2 in half and fold a centre square of fabric 1 in half. Match the two folds and pin into place. Stitch the two together. Repeat on all four sides of the centre square.  
 Next sew the triangles to the corners

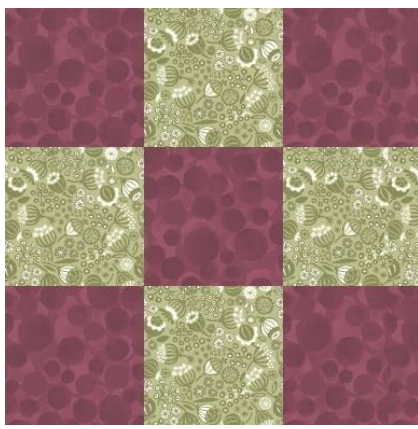
Make 13 in total



**Figure 2**

Lay out the fabric pieces for block 2, as in Figure 3

Stitch in rows and then stitch the rows together to make the block. Make 12 in total



**Figure 3**

Sew the blocks together in rows, as in Figure 4, Figure 5 and the Main Diagram, alternating the rows as shown to complete the quilt centre



**Figure 4**



**Figure 5**

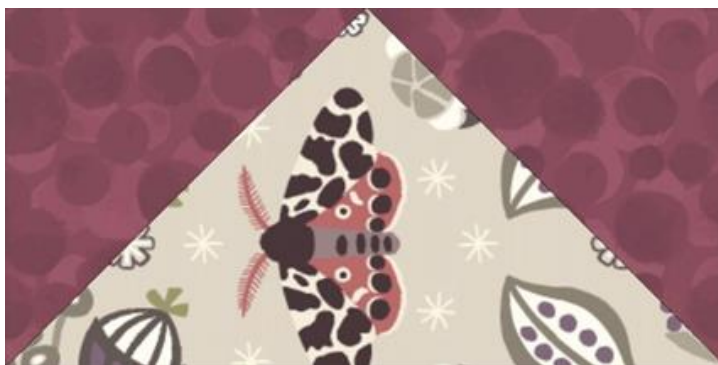
**MAKING UP THE CORNER BLOCKS**



**Figure 6**

Stitch the corner blocks together as in Figure 6. Make 4 in total

## **MAKING UP THE FLYING GEESE BLOCKS**



**Figure 7**

Sew the small triangles to each side of the larger triangle as in Figure 7. Make 60 in total

Join 15 Flying Geese blocks together as in the Main Diagram, for each border. Make 4 in total

Stitch the 1½" x 6½" fabric 6 strips to each end of your Flying Geese strips. Add the corner blocks to each end of the top and bottom Flying Geese strips

### **Borders**

Sew the 1½" x 45½" inner border strips of fabric 6 to the sides of the quilt centre. Sew the 1½" x 47½" inner border fabric 6 strips to the top and bottom

Now sew the Flying Geese strips to the sides and then to the top and bottom of the quilt

Sew the 1½" x 59½" outer border strips of fabric 6 to the sides of the quilt. Sew the 1½" x 61½" inner border fabric 6 strips to the top and bottom, to complete the quilt

### **Quilting**

Sandwich quilt top, wadding and backing together. Quilt by hand or machine as desired

Trim backing and wadding to size

### **Binding**

Use your favourite method from fabric 6 to bind the quilt

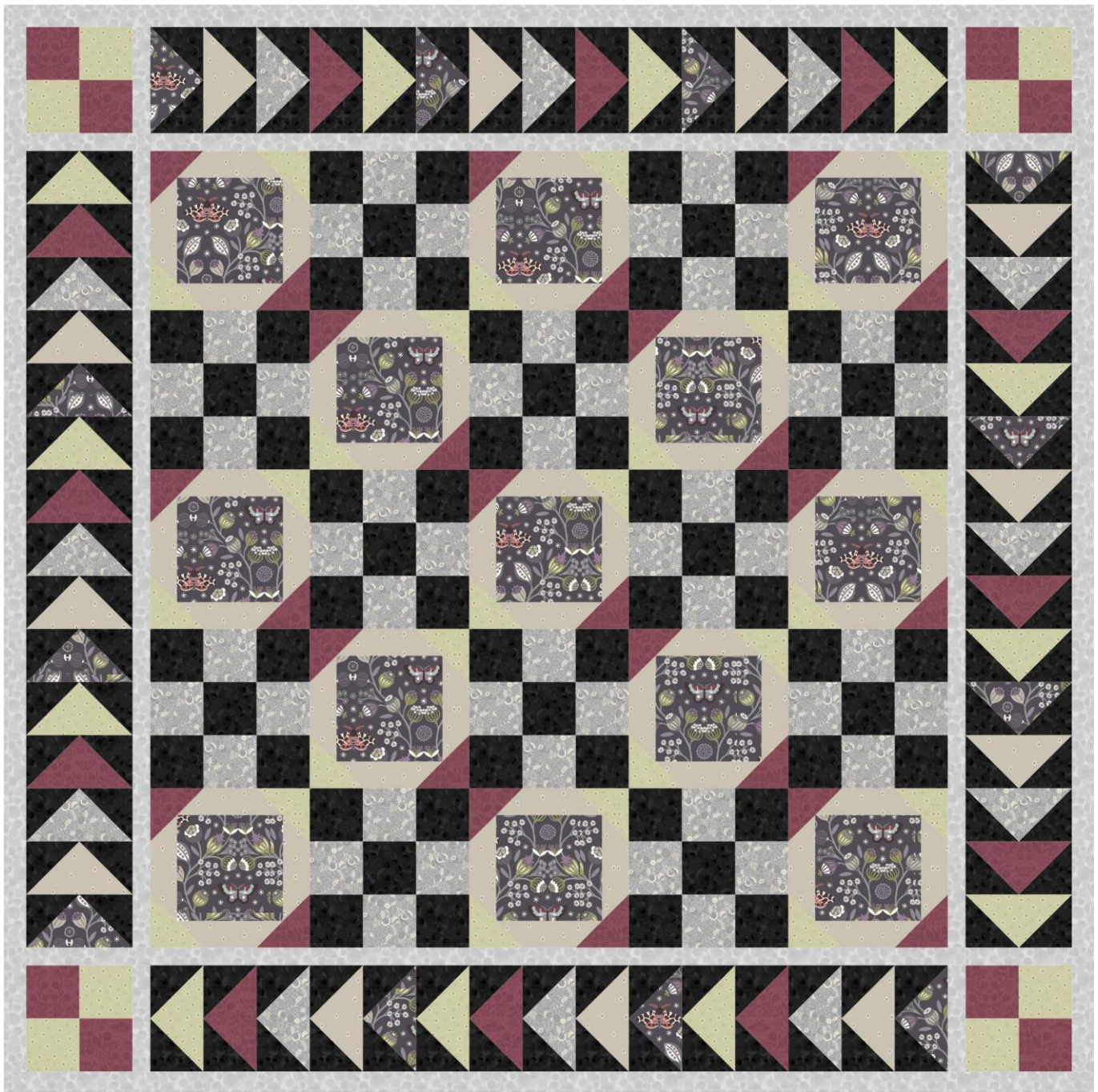




## Winter Garden Quilt

*Designed and made by Sally Ablett*

Quilt Size: 61" x 61"    Block Size: 9½" x 9½"



### DESIGN 3 (Main Diagram)

#### **FABRIC REQUIREMENTS (Winter Garden Collection)**

Fabric 1: ⅝yd - 60cm - A316.3 (Winter garden dark)

Fabric 2: ⅞yd - 80cm - A317.2 (Moth spot natural)

Fabric 3: ⅝yd - 60cm - A318.1 (Seed heads grey)

Fabric 4: ⅝yd - 60cm - A319.3 (Winter garden mono claret)

Fabric 5: ⅝yd - 60cm - A320.1 (Star seed cream)

Fabric 6: 1⅜yd - 1.2mtr - BB94 (Light grey Bumbleberries)

Fabric 7: 1yd - 1mtr - BB20 (Black Bumbleberries)

Wadding and backing 65" x 65"

All measurements include ¼" seam allowances; press each seam as you go



cut 45° angles from top right and top left corners

**Figure 1**

## **CUTTING**

- 1.** From fabric 1 cut:  
 (13x) 6½" x 6½" (block 1)  
 (3x) 7¼" x 7¼" cut in half diagonally twice (border)
- 2.** From fabric 2 cut:  
 (52x) 2" x 7¼" and trim a 45° angle at each end as in Figure 1 and the Main Diagram (block 1)  
 (3x) 7¼" x 7¼" cut in half diagonally twice (border)
- 3.** From fabric 3 cut:  
 (40x) 3½" x 3½" (block 2)  
 (3x) 7¼" x 7¼" cut in half diagonally twice (border)
- 4.** From fabric 4 cut:  
 (13x) 3⅞" x 3⅞" cut in half diagonally once (block 1)  
 (3x) 7¼" x 7¼" cut in half diagonally twice (border)  
 (8x) 3½" x 3½" (corner blocks)
- 5.** From fabric 5 cut:  
 (13x) 3⅞" x 3⅞" cut in half diagonally once (block 1)  
 (3x) 7¼" x 7¼" cut in half diagonally twice (border)  
 (8x) 3½" x 3½" (corner blocks)
- 6.** From fabric 6 cut:  
 (2x) 1½" x 47½" (you will need to join the strips for the length) inner border, top & bottom  
 (2x) 1½" x 45½" (you will need to join the strips for the length) inner border, sides  
 (2x) 1½" x 61½" (you will need to join the strips for the length) outer border, top & bottom  
 (2x) 1½" x 59½" (you will need to join the strips for the length) outer border, sides  
 (8x) 1½" x 6½" corner strips
- 7.** From fabric 7 cut:  
 (60x) 3½" x 3½" (block 2)  
 (60x) 3⅞" x 3⅞" cut in half diagonally once (border)

## **MAKING UP BLOCKS 1 and 2**

Lay out the fabric pieces for block 1, as in Figure 2

Fold a trimmed strip of fabric 2 in half and fold a centre square of fabric 1 in half. Match the two folds and pin into place. Stitch the two together. Repeat on all four sides of the centre square.  
 Next sew the triangles to the corners

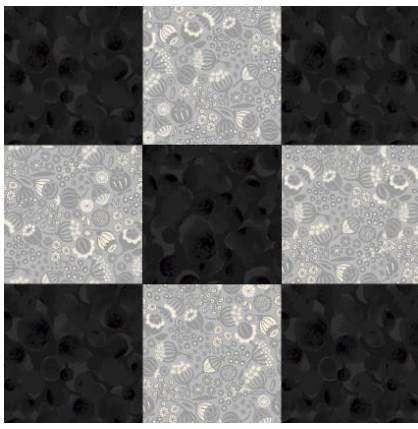
Make 13 in total



**Figure 2**

Lay out the fabric pieces for block 2, as in Figure 3

Stitch in rows and then stitch the rows together to make the block. Make 12 in total



**Figure 3**

Sew the blocks together in rows, as in Figure 4, Figure 5 and the Main Diagram, alternating the rows as shown to complete the quilt centre



**Figure 4**



**Figure 5**

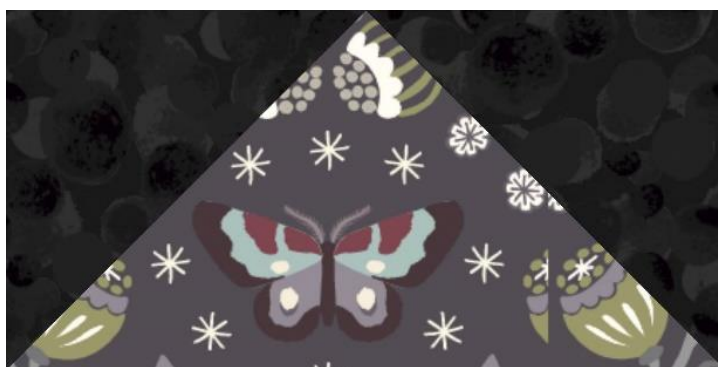
**MAKING UP THE CORNER BLOCKS**



**Figure 6**

Stitch the corner blocks together as in Figure 6. Make 4 in total

## **MAKING UP THE FLYING GEESE BLOCKS**



**Figure 7**

Sew the small triangles to each side of the larger triangle as in Figure 7. Make 60 in total

Join 15 Flying Geese blocks together as in the Main Diagram, for each border. Make 4 in total

Stitch the 1½" x 6½" fabric 6 strips to each end of your Flying Geese strips. Add the corner blocks to each end of the top and bottom Flying Geese strips

### **Borders**

Sew the 1½" x 45½" inner border strips of fabric 6 to the sides of the quilt centre. Sew the 1½" x 47½" inner border fabric 6 strips to the top and bottom

Now sew the Flying Geese strips to the sides and then to the top and bottom of the quilt

Sew the 1½" x 59½" outer border strips of fabric 6 to the sides of the quilt. Sew the 1½" x 61½" inner border fabric 6 strips to the top and bottom, to complete the quilt

### **Quilting**

Sandwich quilt top, wadding and backing together. Quilt by hand or machine as desired

Trim backing and wadding to size

### **Binding**

Use your favourite method from fabric 6 to bind the quilt